



## TANDBERG Movi™

Turn your PC into a videoconferencing system. Movi enables PC users with a webcam to join an enterprise-wide video-conferencing network and communicate visually with colleagues for enhanced productivity from anywhere they need to work — the airport, hotel, coffee shop or home office.



As a centralized network device, Movi enables IT professionals to rapidly deploy PC-based videoconferencing to the entire organization.

#### DESIGN FEATURES

- Extend video to the PC for the entire enterprise
- Centralized network device for one-touch deployment and management
- 1U rack mountable
- LCD panel for easy installation

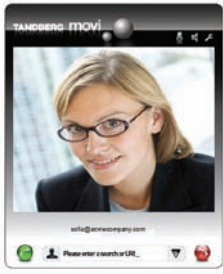
#### APPLICATION FEATURES

- Initiate ad hoc or scheduled video calls while on the go
- Enable video from anywhere
- Intuitive user interface
- Integrates into a full enterprise video network

#### PERFORMANCE FEATURES

- SIP up to 768kbps per active concurrent call
- Administrative control for call bandwidth
- Full duplex audio with audio mute capability
- No software installation required on individual PCs

PROTECT YOUR TECHNOLOGY INVESTMENT WITH TANDBERG'S PORTFOLIO OF **CONSTANT CARE SERVICES**. VISIT [WWW.TANDBERG.COM](http://WWW.TANDBERG.COM)



## MOVI

**BANDWIDTH**  
SIP up to 768 kbps

**VIDEO**  
H.263  
Picture in Picture (PIP)  
SIF (352 x 240 pixels)  
CIF (352 x 288 pixels)

**AUDIO**  
G.711, G.722  
Echo cancellation  
Full Duplex Audio

**PRIVACY FEATURE**  
Headset and microphone via PC  
Audio Privacy (mute)

**IP NETWORK FEATURES**  
DTMF  
URI Dialing  
Integrates with your existing SIP infrastructure

**DIRECTORY SERVICES**  
Support for Local Directories (All registered Movi Clients)  
Phonebooks distributed from TMS  
Placed Calls with Date and Time



## MOVI SERVER

### BANDWIDTH CONTROL

**SYSTEM MANAGEMENT**  
Management via embedded web-server or through SSH  
Administration Password  
Integrates with your existing SIP infrastructure

**NETWORK INTERFACES**  
4 x Ethernet (10/100/1000 Mbit)

**ETHERNET CONNECTIVITY**  
TCP/IP, SSH, HTTP  
Embedded web-server

**ENVIRONMENTAL DATA**  
Operating temperature: 0° C to 40° C (32° F to 104° F)  
Relative humidity: 10% to 90%  
Storage and transport temperature:  
-20° C to 80° C (-4° F to 140° F) non-condensing

**POWER**  
100-240VAC, 50-60Hz, 250W max

**PHYSICAL DIMENSIONS**  
Height: 1.7" (44mm)  
Width: 16.8" (426mm)  
Depth: 16.4" (419mm)  
19" rack-mountable, 1U height

**APPROVALS**  
Directive 73/23/EEC (Low Voltage Directive)  
Standard EN 60950-1  
Directive 89/336/EEC (EMC Directive)  
Standard EN 55022, Class A  
Standard EN 55024  
Standard EN 61000-3-2/-3-3  
Directive 1999/5/EEC (R&TTE Directive)  
Standard TBR 4  
Approved according to UL 60950-1 and CAN/CSA C22.2  
No. 60950-1-03  
Complies with FC C15B Class A

All specifications subject to change without notice, system specifics may vary.

All images in these materials are for representational purposes only, actual products may differ.

TANDBERG and Movi are registered trademarks or trademarks of TANDBERG in the U.S. and other countries.

## TANDBERG

# Movi™

TANDBERG World Headquarters  
Philip Pedersens vei 20  
1366 Lysaker, Norway  
Tel: +47 67 125 125  
Fax: +47 67 125 234  
Video: +47 67 126 126  
tandberg@tandberg.com

1212 Avenue of the Americas,  
24<sup>th</sup> Floor  
New York, NY USA 10036  
Tel: +1 212 692 6500  
Fax: +1 212 692 6501  
Video: +1 212 692 6535  
tandberg@tandberg.com

May 2007

